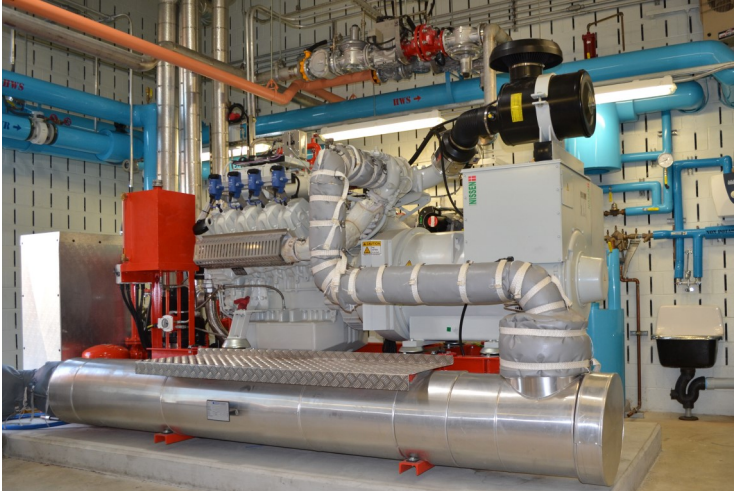


SELECTED CASES



Glenbard WasteWater Authority [WWTP] - USA

Glenbard Wastewater Authority, Glen Ellyn, Illinois was founded in 1977 and is a collaboration between the 2 cities Lombard and Glen Ellyn.

Glenbard Wastewater Authority is responsible for the supply of water, as well as the treatment of wastewater for approx. 109.000 residents and companies, located in Lombard, Glen Ellyn, Valley View/Butterfield and Glen Ellyn Heights.

NISSEN energy has delivered 2 pcs. NPM 375 CHP to the treatment plant, and it has resulted in annual savings of over 200.000 \$.

Glenbard Wastewater Authority received the award "National Engineering Excellence" for the Glenbard WWTP Combined Heat & Power (CHP) project.

From the left:
Representative from ACEC (American Council of Engineering Companies)
Christopher Buckley, P.E. BCEE, Senior Project Manager, Baxter & Woodman
Erik Lanphier, Executive Director, Glenbard Wastewater Authority
Michael B. Nissen, CTO, NISSEN energy a/s
Representative from ACEC (American Council of Engineering Companies)